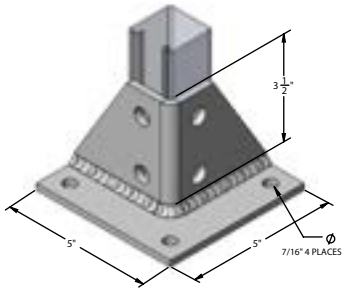
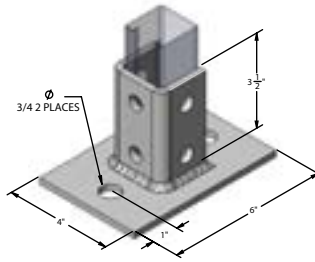


9088PB
post base for 1-5/8" x 1-5/8" strut



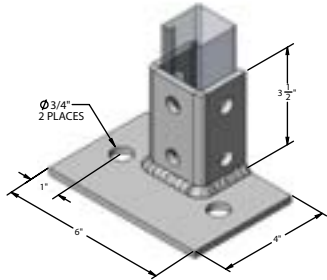
Materials/Finishes:	Zinc Plated (9088PBZ)
Thickness:	1/4"
Hole Dim:	9/16"
Wgt. each (lbs)	2.88

9089PB
post base for 1-5/8" x 1-5/8" strut



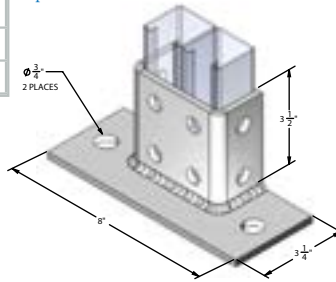
Materials/Finishes:	Zinc Plated (9089PBZ)
	Hot-Dip Galvanized (9089HDG)
	T-304 Stainless (9089PBSS)
	T-316 Stainless (9089PBSSX)
Thickness:	1/4"
Hole Dim:	9/16"
Wgt. each (lbs)	3.12

9090PB
post base - flush mount for 1-5/8" x 1-5/8" strut.



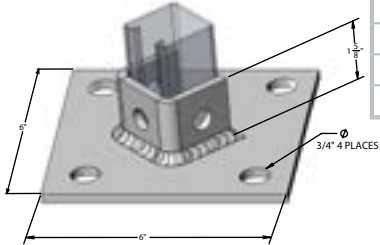
Materials/Finishes:	Zinc Plated (9090PBZ)
Thickness:	1/4"
Hole Dim:	9/16"
Wgt. each (lbs)	3.12

9091PB
post base for 1-5/8" x 3-1/4" strut



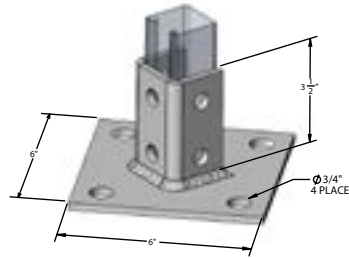
Materials/Finishes:	Zinc Plated (9091PBZ)
Thickness:	1/4"
Hole Dim:	9/16"
Wgt. each (lbs)	3.20

9092PB
post base - diagonal for 1-5/8" x 1-5/8" strut



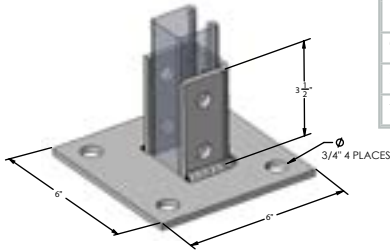
Materials/Finishes:	Zinc Plated (9092PBZ)
	T-304 Stainless (9092PBSS)
	T-316 Stainless (9092PBSSX)
Thickness:	1/4"
Hole Dim:	9/16"
Wgt. each (lbs)	3.14

9093PB
post base - diagonal for 1-5/8" x 1-5/8" strut



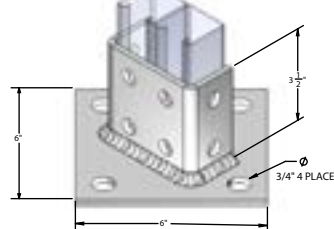
Materials/Finishes:	Zinc Plated (9093PBZ)
Thickness:	1/4"
Hole Dim:	9/16"
Wgt. each (lbs)	3.92

9094PB
post base - square for 1-5/8" x 1-5/8" strut



Materials/Finishes:	Zinc Plated (9094PBZ)
	T-304 Stainless (9094PBSS)
	T-316 Stainless (9094PBSSX)
Thickness:	1/4"
Hole Dim:	9/16"
Wgt. each (lbs)	3.92

9095PB
post base for 1-5/8" x 3-1/4" strut
6" x 6" base



Materials/Finishes:	Zinc Plated (9095PBZ)
Thickness:	1/4"
Hole Dim:	9/16"
Wgt. each (lbs)	4.04

PROJECT INFORMATION			APPROVAL STAMP
Project:			Notes:
Address:			
Contractor:			
Engineer:			
Date:			
Approved	Approved as Noted	Not Approved	